

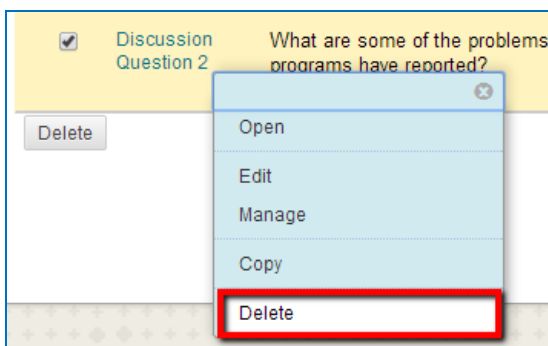
Deleting Discussion Forums and Threads

When you delete a forum or thread, all content is permanently deleted. For a less permanent solution, you can make a forum unavailable.

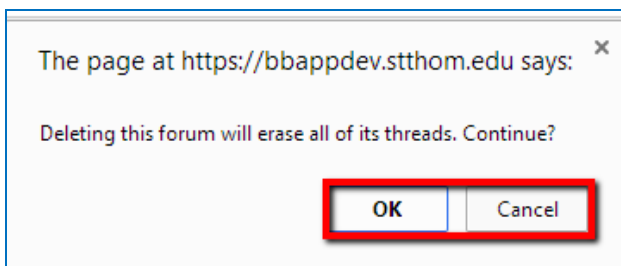
NOTE: *It is suggested that you make the forum or threads unavailable rather than deleting them.*

When deleting graded discussion content, you determine if the Grade Center column and scores are also deleted.

1. Access the Discussion Board, and click the contextual menu for a forum or thread.
2. Select **Delete** to delete the content of the forum or thread permanently.



3. Depending on your web browser, and whether you are deleting a forum or a thread, you will encounter one of a variety of confirmation message boxes. Click **OK** in the pop-up window to continue deleting, or **Cancel** to keep the content.



4. For any forum or thread with an associated column in Grade Center, you will see the Delete Confirmation page next. Here you have two options:
 - **Do not select the checkboxes:** The graded forum or thread will be deleted, but the Grade Center column and scores you assigned are retained. For example, you graded all students' posts and want to keep the Grade Center column for the final grade calculations. If you delete the forum or thread, yet retain the Grade Center column, you can delete that column from the Grade Center at any time.
 - **Select the checkboxes:** Both the Grade column in the Grade Center and the forum or thread are deleted. For example, if you do not want to include the grade column for the discussion posts in the final grade, you can safely delete both.
5. Click **Remove**. The forum(s) or thread(s) will no longer appear in the Discussion Board list.

DELETE GRADE COLUMN

Warning: The following content are gradable or contains threads that are gradable. To delete the Grade Center item(s) for the content, check the check box below. This action cannot be undone. To prevent content from being deleted, hit Cancel below.

<input checked="" type="checkbox"/>	Content With Associated Grade Center Column(s)
<input checked="" type="checkbox"/>	Discussion Question 2

Displaying 1 to 1 of 1 items | [Show All](#)

*Click **Cancel** to go back.*

[Cancel](#) [Remove](#)