

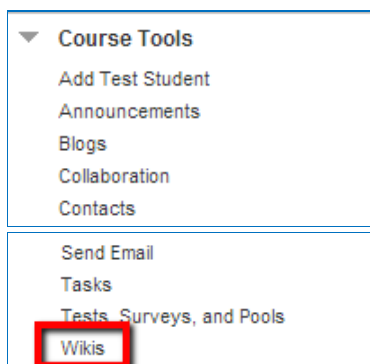
## Deleting a Wiki or Wiki Page

When you delete a Wiki, all pages and comments will be eliminated permanently and cannot be recovered. Individual Wiki pages can also be deleted, with the exception of the first page in a Wiki.

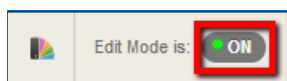
### Deleting a Wiki

In most cases, you will not want to delete an entire Wiki. Doing so will delete all of the Pages in that Wiki. You might prefer instead to make the Wiki unavailable to students. If you need to delete one:

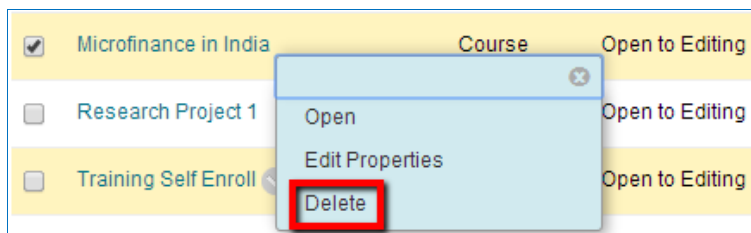
1. Log into Blackboard, and select your course.
2. On the Control Panel, click **Course Tools**, then **Wikis**.



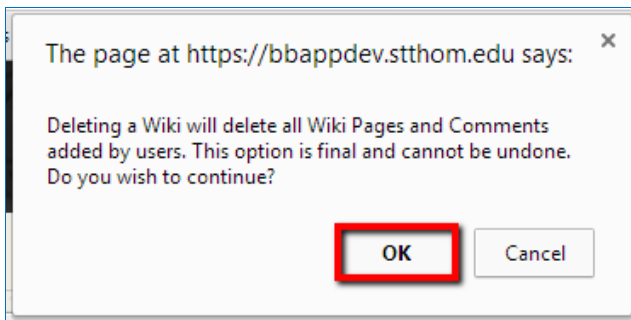
3. Make sure that Edit Mode is ON.



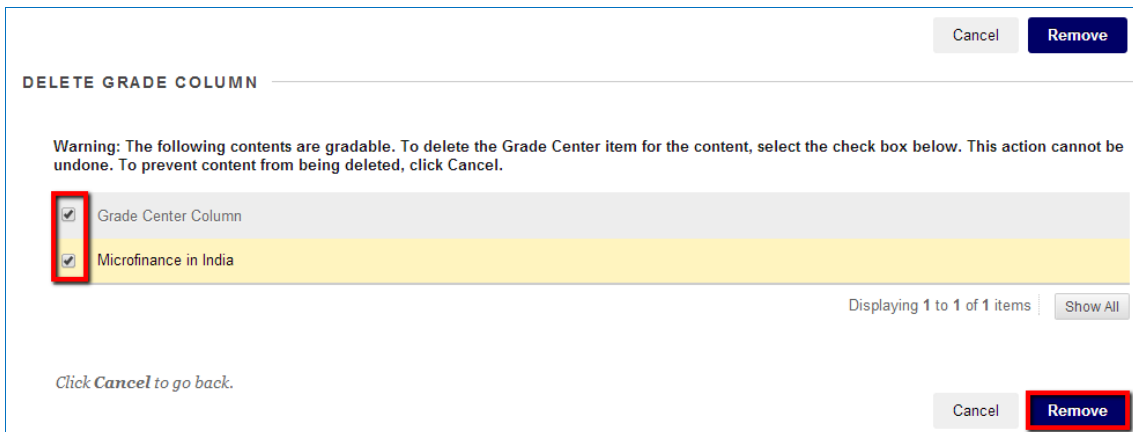
4. Click the contextual arrow for the Wiki, and select **Delete**.



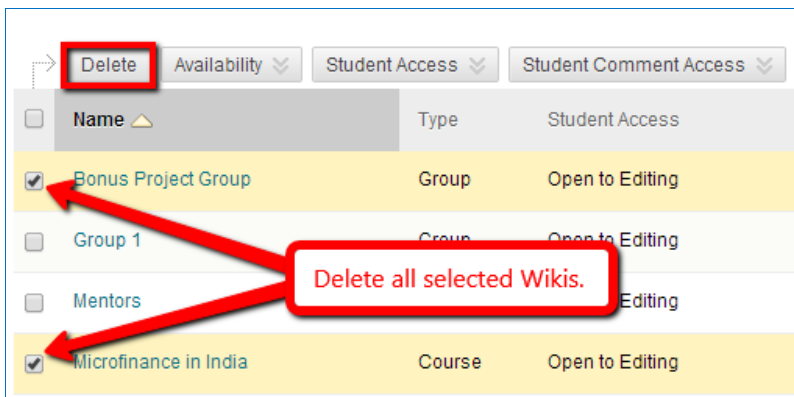
5. Confirm whether you would like to delete the Wiki along with all its entries and comments.



6. If the Wiki has an associated column in Grade Center, the Delete Confirmation page appears. Check the checkboxes for the Wiki itself, the Grade Center column, or both, and click **Remove**. Click **Cancel** to avoid deleting the Wiki and its associated column.

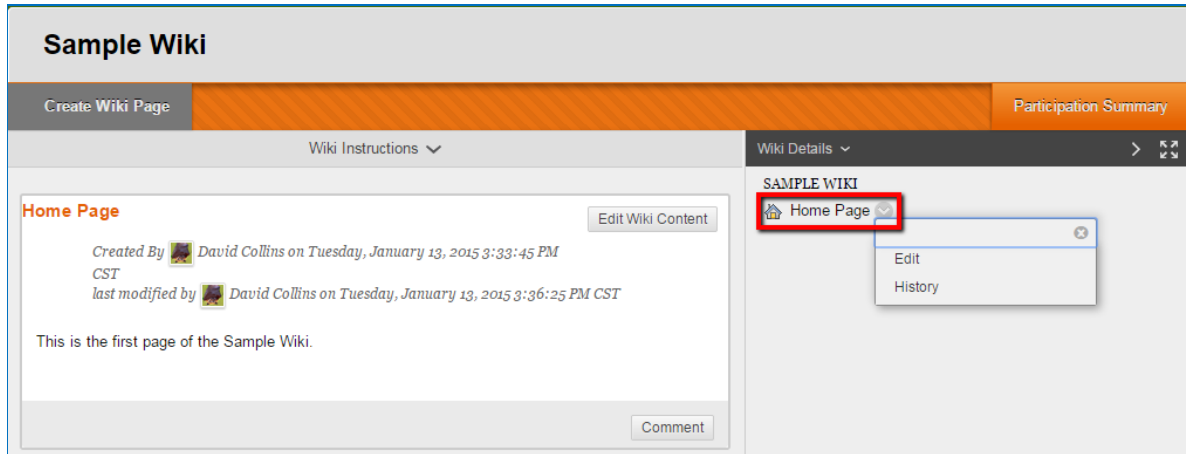


7. You can also delete multiple Wikis at once by checking their checkboxes on the Wikis page and clicking the **Delete** button above or below the list.

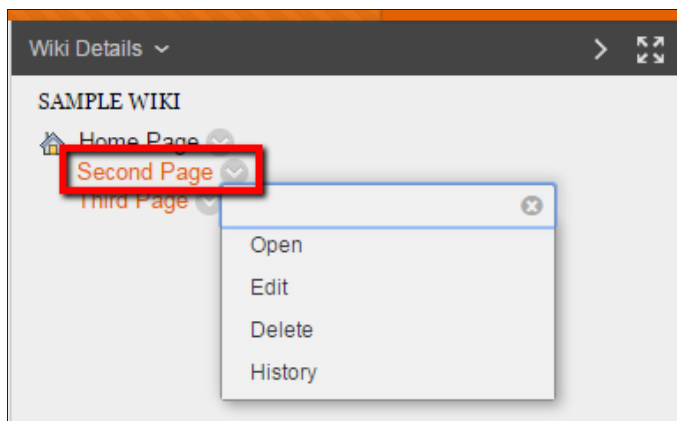


## Deleting a Wiki Page

To delete a Wiki Page, navigate into the Wiki, and click the contextual arrow for any page. Not every Page will have a **Delete** command: The first Page added to a Wiki is designated as the home page, and it cannot be deleted. Its contextual menu features only two commands: **Edit** and **History**.



Subsequent Pages get an **Open** command (visible only if the Page is not currently open) and a **Delete** command. Students do not see this command even for Pages they have contributed.



A box appears asking you to confirm your intentions, reminding you that all associated content and comments will also be deleted. Click **OK** to proceed to **Cancel** to halt the process.

