



THE ROADMAP:

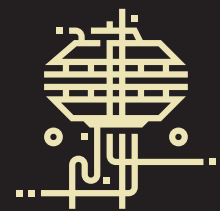
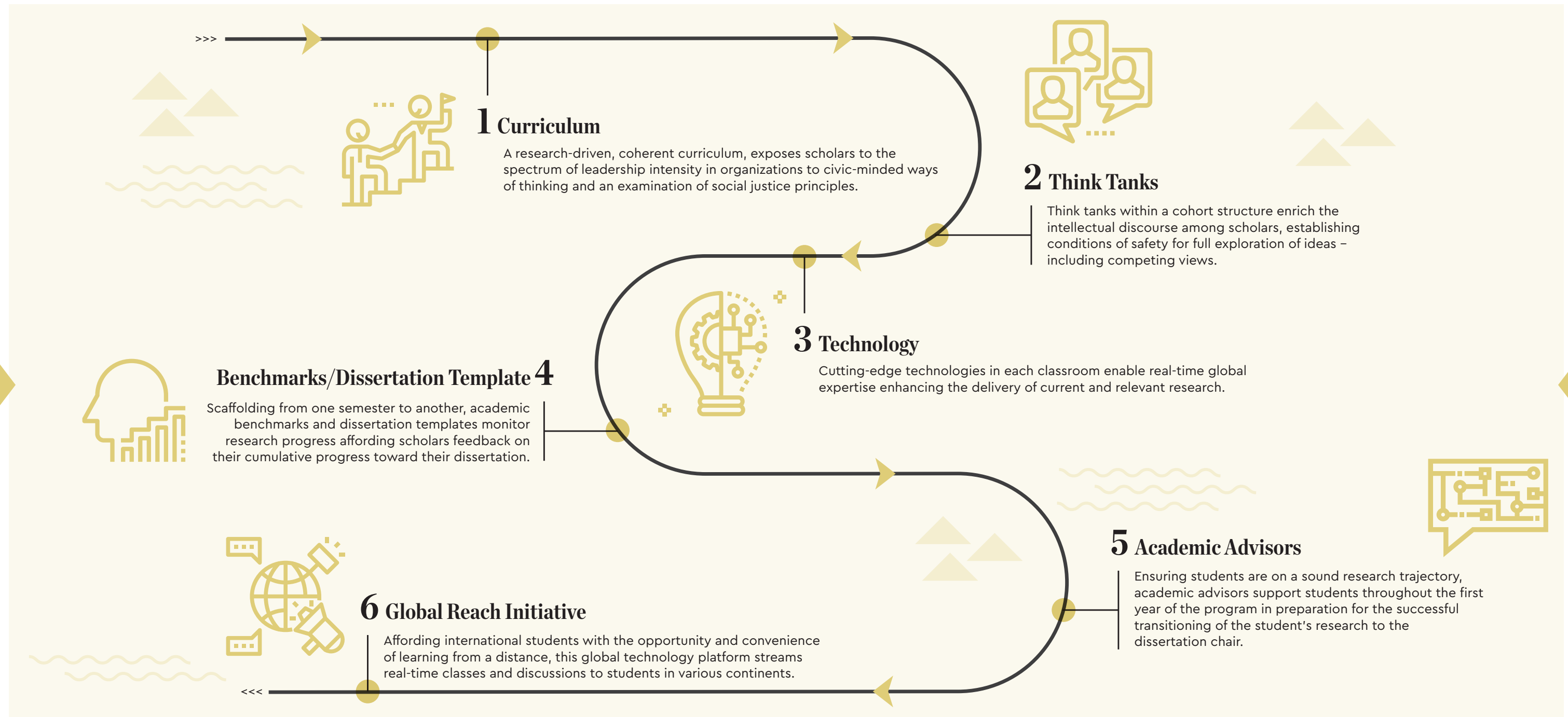
Inside the Doctorate Program



THE ROADMAP:

Inside the Doctorate Program

Venturing beyond traditional doctoral models, this 3-year, part-time program is interdisciplinary and designed for both public and private educators as well as individuals from other education-related fields.



The International Center for the Advanced Study of Advocacy in Social Justice

Serving as a virtual dissemination hub, this research center works with researchers, educational practitioners, pertinent agencies, and relevant policymakers in addressing ethical leadership and social justice issues affecting oppressed communities on the global stage. The center additionally serves as the link between theory and practice by providing a cooperative research global environment for study by both scholars and policy makers.